



# ISOFLEX ENGINE MOUNTS

## Why choose the IsoFlex MAXImount System?

The IsoFlex MAXImount is a dual-purpose system for marine applications that isolates and minimizes vibration and produces maximum load-carrying ability in 360 degrees. IsoFlex mounts or isolators for industrial applications have identical benefits, the most important being that they contain no rubber components. IsoFlex's polyurethane materials make for a superior product, ensuring long-lasting use and unmatched durability.

## Why are flexible mounts the preferred choice for larger vessels?

Rigid mounts are generally attached to the stringer with bolts or fasteners, or permanently welded in place. While rigid mounts provide accurate alignment between the motor and its surrounding parts, they can be damaged by vibration in heavy-duty applications. For larger to commercial-sized vessels, using the wrong mount can cause excessive vibration and engine damage.

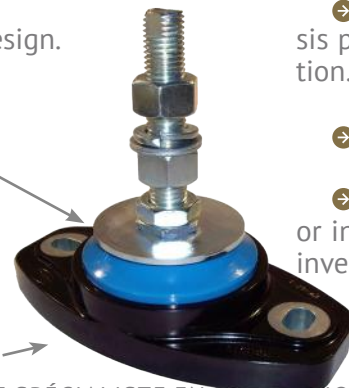
IsoFlex designs and manufactures flexible mounts, which feature a layer of co-polymer between the isolator and the engine that minimize noise and vibration, thereby increasing the life of the engine and its related parts. Flexible engine isolators or mounts can also significantly lessen the impact as the engine starts and stops, which reduces shock to the system. Take the right steps to match the type of mount to your engine and its specific application to avoid performance problems later.

Use the IsoFlex Marine Engine Mounts Search Tool to help make your selection.

## BENEFITS

- ➔ Cast with high quality engineering grade polymer.
- ➔ Patented co-polymer thrust ring.
- ➔ Vibration isolation.
- ➔ Tailored installation using proprietary software analysis.
- ➔ IsoFlex MAXImount System allows the mounts to be rebuilt by replacing cores if and when needed.
- ➔ "Fail safe" or "captured" design.

Resilient element	Hardness shores
Yellow	50
Red	60
Black	70
Blue	75
Green	80
Grey	90
Base Black	



## FEATURES

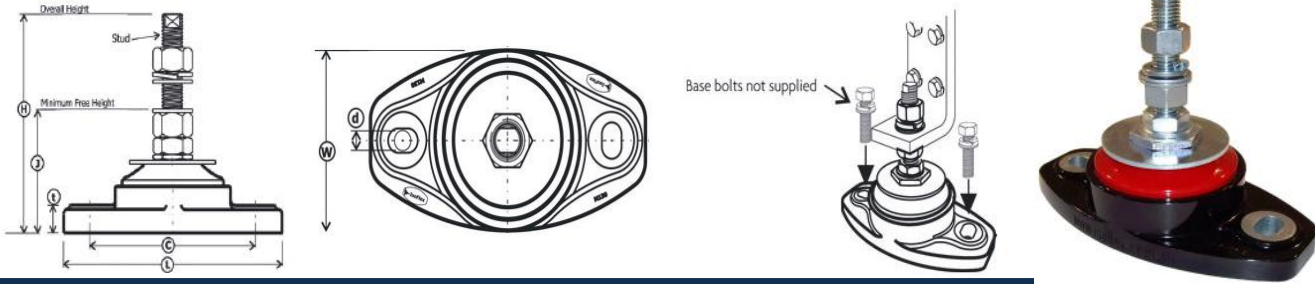
- ➔ **NO RUBBER COMPONENTS:** IsoFlex polymers are resistant to oils, fuels, water and climatic conditions.
- ➔ Superior stability with 360 degree thrust and lateral control for reduced driveline misalignment without sacrificing vibration isolation.
- ➔ Minimizing vibration reduces equipment fatigue, human fatigue, maintenance and associated noise.
- ➔ The core selection process and vibration analysis provide the best vibration profile for each installation.
- ➔ Lower long-term cost of ownership.
- ➔ Safety in heavy duty applications, knockdown or inversions. Tested to 6g forces in all axes including inversion, special mounts to 10g.



**S TYPE**

S Type adjusting stud engine and machinery mounts are designed specifically for marine, high performance and other thrust load installations where height adjustment is required. These mounts are complete with high tensile studs, are fail safe, ie. captured design and tested to a minimum 6G force loading in thrust, axial, lateral and inverted directions and fitted with overload snubbers.

Mounts are fitted with patented 360 degree integral thrust ring for enhanced stability. All metal components are zinc plated to ASTM B633 SC3 standard. Base bolts are not supplied. Stainless steel fittings are available on request. Swivel adjusters for high demand applications are available as an option on 20mm and 24mm studs on regular mounts, and come standard on M130XHD, M125XHD, M135HD and M140HD.

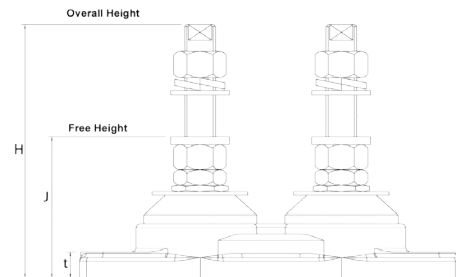
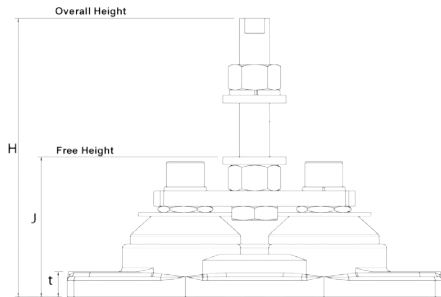
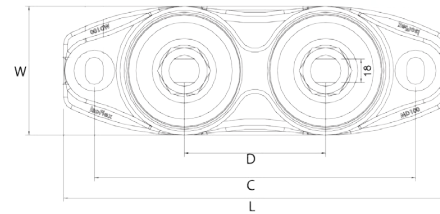
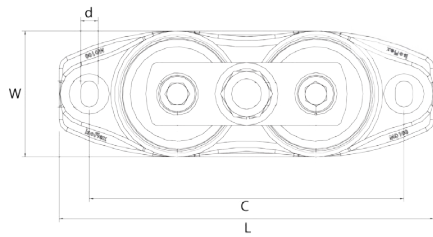


Recom- mended Working Load/Mount kg	Base Foot- print L x W mm	Base bolt centers C mm	Base bolt diameter d mm	No of bolts	Base Thic- kness t mm	Stud Ø mm	Minimum Free Height J mm	Overall Height H mm	Weight kg	Reference
30-120	225 x 74	174	M10	2	17	M16	105	166	1.3	IMDC30-16S
25-200	134 x 75	100-105	M10	2	18	M12	65	103	0.6	IM55-12S
25-200	134 x 75	100-105	M10	2	18	M16	73	127	0.9	IM55-16S
75-300	177 x 98	127	M12	2	20	M16	86	140	1.2	IM75-16S
75-300	177 x 98	127	M12	2	20	M20	91	159	1.3	IM75-20S
75-300	190 x 98	140	M12	2	20	M16	86	140	1.2	IM85-16S
75-300	190 x 98	140	M12	2	20	M20	91	159	1.3	IM85-20S
75-350	177 x 100	127	M12	2	20	M20	104	173	1.4	IM90-20S
75-350	177 x 100	127	M12	2	20	M24	108	196	1.6	IM90-24S
75-350	188 x 100	140	M12	2	20	M20	104	173	1.8	IM100-20S
75-350	188 x 100	140	M12	2	20	M24	108	196	2.0	IM100-24S
75-350	220 x 107	170	M12	2	20	M20	122	191	2.0	IM110-20S
75-350	220 x 107	170	M12	2	20	M24	128	214	2.4	IM110-24S
250-750	230 x 112	182	M16	2	25	M20	96	175	2.4	IM120HD-20S
250-750	230 x 112	182	M16	2	25	M24	96	175	2.9	IM120HD-24S
600-1000	230 x 112	182	M16	2	25	M20	96	175	2.4	IM120XHD-20S
600-1000	230 x 112	182	M16	2	25	M24	96	175	2.9	IM120XHD-24S
250-750	240 x 127	170	M16	2	25	M20	128	196	2.4	IM125HD-20S
250-750	240 x 127	170	M16	2	25	M24	134	219	3.2	IM125HD-24S
600-1000	240 x 127	170	M16	2	25	M24	134	219	3.2	IM125XHD-24S
250-750	240 x 127	182	M16	2	25	M20	128	196	2.4	IM127HD-20S
250-750	240 x 127	182	M16	2	25	M24	134	219	3.2	IM127HD-24S
600-1000	240 x 127	182	M16	2	25	M24	134	219	3.2	IM127XHD-24S
250-750	240 x 127	182	M16	2	25	M20	104	173	2.4	IM130HD-20S
250-750	240 x 127	182	M16	2	25	M24	110	195	2.9	IM130HD-24S
600-1000	240 x 127	182	M16	2	25	M24	110	195	2.9	IM130XHD-24S
250-750	240 x 127	182	M16	2	25	M20	83	170	2.4	IM130HDLP-20S
250-750	240 x 127	182	M16	2	25	M24	89	195	2.9	IM130HDLP-24S
600-1000	240 x 127	182	M16	2	25	M24	89	195	2.9	IM130XHDLP-24S
600-1200	240 x 145	182	M16	2	25	M24	140	217	3.8	IM135HD-24S
600-1200	240 x 145	182 x 65	M16	4	25	M24	120	199	3.9	IM138HD-24S

Other dimensions on request



**BRIDGE & DOUBLE STYLE MOUNTS**



Recom- mended Working Load/ Mount kg	Base Foot- print L x W mm	Base bolt centers C mm	Base bolt dia- meter d mm	No of bolts	Base Thic- kness t mm	Stud Ø mm	Distance Between Studs D mm	Minimum Free Height J mm	Overall Height H mm	Weight kg	Reference
300-700	300 x 100	250	M16	2	20	M24	Bridge	111	221	4.5	IMD100-24SB
300-700	300 x 100	250	M16	2	20	M24	110	109	197	4.5	IMD100-24DS
500-1500	367 x 127	308	M16	2	25	M24	140	134	219	6.3	IMD125HD-24DS
1200-2000	367 x 127	308	M16	2	25	M24	140	134	219	6.4	IMD125XHD-24DS
500-1500	367 x 127	308	M16	2	25	M24	Bridge	157	253	6.3	IMD125HD-24SB
1200-2000	367 x 127	308	M16	2	25	M24	Bridge	157	253	6.3	IMD125XHD-24SB
500-1500	367 x 127	308 x 60	M16	4	25	M24	140	134	219	6.5	IMD128HD-24DS
1200-2000	367 x 127	308 x 60	M16	4	25	M24	140	134	219	6.5	IMD128XHD-24DS
600-1000	367 x 127	308 x 60	M16	4	25	M24	Bridge	157	253	6.2	IMD128HD-24SB
1200-2000	367 x 127	308 x 60	M16	4	25	M24	Bridge	157	253	6.2	IMD128XHD-24SB
500-1500	520 x 127	445	M20	2	25	M24	Bridge	100	220	10.1	IMD130HD-24SB
1000-3000	650 x 127	575	M20	3	25	M24	261	100	220	15.3	IMD130HD-24DS



Other dimensions on request