



## ALUMINIUM PROPELLERS



### STAINLESS STEEL PERFORMANCE AT ALUMINUM PRICES

Stainless steel blade geometry used in all aluminum patterns results in less blade flex. Higher efficiency equals better fuel economy, better top end, faster hole shot, and excellent cornering & handling.

### TUNED VENTS FOR FAST HOLE SHOT

Vent holes in the prop's barrel allow exhaust gases to escape, reducing water density around the propeller's blades during acceleration. This causes the propeller to rotate faster at slower speeds resulting in more HP. More HP at lower speeds means faster acceleration and a faster hole shot. Turning Point is the only manufacturer offering this race proven feature in our Hustler & Legacy Aluminum Propellers. Available on most models, please refer to selection chart.

### PERFORMANCE TUNED RAKE ANGLES

Higher rake angles tighten the vortex produced by the prop, adding to boat lift and overall performance.

### IMPROVE HANDLING AND BOAT LIFT

Through advanced pitch line and rake line cupping.

### HIGH FLOW-THROUGH BARREL EXHAUST SYSTEM

Maximizing exhaust flow increases horsepower and top end speed.

### TUNED PROGRESSIVE PITCH ANGLES

Accelerating and channeling water to minimize slip increases performance and fuel economy.

### LONG LASTING FINISH - POWDER COATED

The 5 step process creates a uniform, durable, high-quality, and attractive finish that protects the aluminum from corrosion.

### COMPATIBLE WITH COMPETITORS' HUB SYSTEMS

Works with Mercury® Flow-Torq®, Michigan Wheel® XHS®, Solas® Rubex™ hub kit systems (All trademarks are the property of their respective owners). NOTE: Not applicable with Turning Point's 10, 20 and 200 Hub Kit series.

Hub Kit Available for Aluminum

Turning Point offers its unique hub and housing system from 8HP to 300+HP, a range of engines un-matched in the industry. Hub kit covered by USA & worldwide patents

Utilizing high tech shock absorbing polymers and a solid brass spindle, the Turning Point MasterGuard & MasterTorque hubs will not corrode or break like competing hubs, and are covered by an industry leading Lifetime Warranty. Each hub's one piece design ensures simple housing replacement, making a prop change quick and easy.

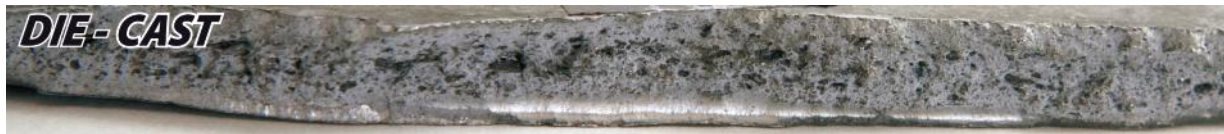


## SQUEEZE CAST FOR ADDED STRENGTH

Turning Point Exclusive Process applied to all aluminum props - Squeeze Cast process generates the highest mechanical properties attainable in a cast product, resulting in tighter grain structures. Competitors use old Die Cast processes that results in high blade flex and poor performance.



**TURNING POINT EXCLUSIVE PROCESS · TIGHT GRAIN · STRONG AND STIFF · REDUCES FLEX FOR MAXIMUM THRUST**



**COMPETITORS' PROCESS · POCKETS, VOIDS, AIR BUBBLES · WEAK AND FLEXIBLE · INEFFICIENT TRANSFER OF POWER · POOR REPAIRABILITY**



## FOUR BLADE ALUMINUM HUSTLER PROPELLER

New Four Blade Design uniquely engineered with two blade geometries: two blades utilize the Hustler high performance variable rake and aggressive pitch design for incredible hole shot and cornering, and two blades utilize a "cleaver" style shape for high speed and maximum stern lift.

This combination results in the highest performance aluminum propeller on the market, unmatched in cornering, acceleration, boat handling, and top speed. This is the ultimate water sports propeller, but also offers any boater four blade performance with none of the usual top speed reductions normal to other designs.



## HUB

### ELIMINATE HUB SYSTEM VIBRATION & CHATTER

Innovative one-piece design reduces the number of parts and eliminates failures commonly seen in multi-part hub systems.

### ELIMINATE HUB CRACKING & FAILURE

The glass reinforced high-tech polymer construction increases flexibility, eliminating potential material stress fractures.

### CORROSION RESISTANT MATERIALS

Premium corrosion resistant brass splines.

### REDUCE GEAR SHOCK & ENGINE/DRIVE DAMAGE

Shock absorbing hi-tech polymer cushion.

### REDUCES INVENTORY COST

Turning Point is the only manufacturer to offer the hub and housing system down to 8HP outboard applications.

### REDUCE PROP REPLACEMENT COST BY 20-30%

Hub kits are designed to be reusable even after most propeller impacts, eliminating the need to replace the hub system when replacing a damaged propeller.

### EASY TO INSTALL – CONSUMER FRIENDLY

Clear and easy step by step directions coupled with minimal parts makes installation easy.

### INCREASES PERFORMANCE AND HP

High-flow through barrel exhaust system maximizes exhaust flow increasing horsepower and top end speed.



### INTERCHANGEABLE AVEC LES HÉLICES CONCURRENTES INTERCHANGES WITH OTHER MANUFACTURERS' PROPELLERS

Upgrades and replaces Mercury® Flow-Torq®, Michigan Wheel® XHS®, Solas® Rubex™ hub kit systems (All trademarks are the property of their respective owners). NOTE: Not applicable with Turning Point's 10, 20 and 200 Hub Kit series.



### REDUCES 25-75HP HUB INVENTORY BY ALMOST 60%

Competitor's hub kit systems take 7 kits to fit engine applications in the 25-75HP range, where Turning Point only needs 3 kits (10 Series Hub Kits).

US Patent #6,471,481, #6,685,432 & worldwide patents.

US and worldwide patents pending.



**500 SERIES HUB SYSTEM**  
40 - 300+ HP

**10 SERIES HUB SYSTEM**  
40 - 75 HP



**20 SERIES HUB SYSTEM**  
20 - 35 HP



**200 SERIES HUB SYSTEM**  
8 - 18 HP





## STAINLESS STEEL PROPELLERS

### IMPROVED HANDLING AND BOAT LIFT

Through advanced pitch line and rake line cupping, maximizes exhaust flow increasing horsepower and top end speed.

### TUNED PROGRESSIVE PITCH ANGLES

Accelerating and channeling water to minimize slip increases performance and fuel economy.

### TUNED VENTS FOR FAST HOLE SHOT

Vent holes in the prop's barrel allow exhaust gases to escape, reducing water density around the propeller's blades during acceleration. This causes the propeller to rotate faster at slower speeds resulting in more HP. More HP at lower speeds means faster acceleration and a faster hole shot.

### HIGH FLOW-THROUGH BARREL EXHAUST SYSTEM

Maximizing exhaust flow increases horsepower and top end speed

### COMPATIBLE WITH COMPETITORS' HUB SYSTEMS

Works with Mercury® Flow-Torq®, Michigan Wheel® XHS®, Solas® Rubex™ hub kit systems (All trademarks are the property of their respective owners).  
NOTE: Not applicable with Turning Point's 10, 20 and 200 Hub Kit series.

### HUB KIT SYSTEM AVAILABLE FOR STAINLESS

Turning Point offers its unique hub and housing system from 8HP to 300+HP, a range of engines unmatched in the industry. Hub kit covered by USA & worldwide patents

Utilizing high tech shock absorbing polymers and a solid brass spindle, the Turning Point MasterGuard & MasterTorque hubs will not corrode or break like competing hubs, and are covered by an industry leading Lifetime Warranty. Each hub's one piece design ensures simple housing replacement, making a prop change quick and easy.



Ce document n'est pas contractuel - This document is not contractual



Engine	Year	Hub ref.	OEM Ref.	Ø x Pitch	Propeller Ref.	
<b>8 TO 18 HP - HUSTLER - ALUMINIUM</b>						
10 Splines Type M						
DT 9.9	83/87	<b>HHB 206</b>				
DT 15	83/88	<b>HHB 206</b>	58100-93763-019	9 x 9	<b>HHB R4 0909</b>	
DT15 C	89/97	<b>HHB 206</b>	58100-93733-019	9 x 10	<b>HHB R4 0910</b>	
DF9.9 / 15	97 & +	<b>HHB 206</b>				
Doesn't fit to DT 8C & 9.9C (1988 to 1997)						
<b>20 TO 35 HP - HUSTLER - ALUMINIUM</b>						
10 Splines						
DT 20 / 25 / 25C / 30 / 30C	87 & +	<b>HHB 26</b>	58100-96420-019	10-3/8 x 11	<b>HHB R2 1011</b>	
DF 25 / 30	00 & +	<b>HHB 26</b>	58110-96440-019	10-3/8 x 13	<b>HHB R2 1013</b>	
<b>40 TO 75 HP - HUSTLER - ALUMINIUM</b>						
15 Splines						
DT 35C / 40 / 50 / 50M / 55 / 60 / 65	89 & +	<b>HHB 11</b>	58100-94302-019	12-1/2 x 8	<b>HHB H1 1208</b>	
DF40 / 50	99 & +	<b>HHB 11</b>	58100-95212-019	12 x 10-1/2	<b>HHB H1 1210</b>	
			58100-95222-019	10-7/8 x 11	<b>HHB H1 1011</b>	
			58100-95393-019	10-3/4 x 12	<b>HHB H1 1012</b>	
			58100-94313-019	10-1/2 x 13	<b>HHB H1 1013</b>	
			58100-95353-019	10-3/8 x 14	<b>HHB H1 1014</b>	
			58100-95363-019	10-1/8 x 15	<b>HHB H1 1015</b>	
<b>40 TO 75 HP - HUSTLER - ALUMINIUM</b>						
13 Splines						
40/50 HP	95/98	<b>HHB 11</b>	/	12 x 9	<b>HHB E1 1209</b>	
70 HP	91/95	<b>HHB 11</b>	/	12 x 11	<b>HHB E1 1211</b>	
75 HP	95/98	<b>HHB 11</b>	/	12 x 13	<b>HHB E1 1213</b>	
				10-1/2 x 11	<b>HHB E1 1011</b>	
				10-1/2 x 12	<b>HHB E1 1012</b>	
				10-1/2 x 13	<b>HHB E1 1013</b>	
				10-1/2 x 14	<b>HHB E1 1014</b>	
			/	10-1/2 x 15	<b>HHB E1 1015</b>	
<b>40 TO 150 HP - HUSTLER - ALUMINIUM</b>						
13 Splines						
DT 75 / 85 / 90 / 100 / 115 / 140	89 & +	<b>HHB 506</b>	/	14 x 11	<b>HHB LE2 1411</b>	
DF 60 / 70	98 & +	<b>HHB 506</b>	/	14 x 13	<b>HHB LE2 1413</b>	
				58100-94500-019	13-3/4 x 15	<b>HHB LE2 1315</b>
				58100-94512-019	13-1/4 x 17	<b>HHB LE2 1317</b>
				58100-94522-019	13-1/4 x 19	<b>HHB LE2 1319</b>
				58100-94532-019	13-1/4 x 21	<b>HHB LE2 1321</b>
15 Splines						
DF 90	01 & +	<b>HHB 509</b>	/	14 x 11	<b>HHB LE1 1411</b>	
DF 115	01 & +	<b>HHB 509</b>	/	14 x 13	<b>HHB LE1 1413</b>	
				13-3/4 x 15	<b>HHB LE1 1315</b>	
DF140	01 & +	<b>HHB 501</b>	58100-90J00-019	13-1/4 x 17	<b>HHB LE1 1317</b>	
				58100-90J10-019	13-1/4 x 19	<b>HHB LE1 1319</b>
				58100-90J20-019	13-1/4 x 21	<b>HHB LE1 1321</b>
				Add 2 inches of pitch for OEM propeller replacement		
<b>135 TO 300 HP - HUSTLER - ALUMINIUM</b>						
13 Splines						
DT 150 / 175 / 200 / 225	86 & +	<b>HHB 507</b>			<b>3 Blades</b>	
DF 150 / 175 / 200 / 225 / 250	All	<b>HHB 507</b>	/	15-1/4 x 15	<b>HHB LE 1515</b>	
				58100-90J01-019	14-1/2 x 17	<b>HHB LE 1417</b>
				58100-90J11-019	14-1/4 x 19	<b>HHB LE 1419</b>
				58100-90J21-019	14-1/4 x 21	<b>HHB LE 1421</b>
				58100-90J31-019	14-1/4 x 23	<b>HHB LE 1423</b>
			/	14 x 19	<b>HHB LE 1417 4(L)</b>	
			/	14 x 21	<b>HHB LE 1419 4(L)</b>	
			/	14 x 21	<b>HHB LE 1421 4(L)</b>	



Engine	Year	Hub ref.	OEM Ref.	Ø x Pitch	Propeller Ref.
<b>40 TO 75 HP - EXPRESS - INOX</b>					
13 Splines					
DT 35C / 40 / 50 / 50M / 55 / 60 / 65	89 & +	<b>HHB 11</b>	/	12 x 9	<b>HHB E1 1209</b>
DF40 / 50	99 & +	<b>HHB 11</b>	/	12 x 11	<b>HHB E1 1211</b>
			/	12 x 13	<b>HHB E1 1213</b>
			/	10-1/2 x 11	<b>HHB E1 1011</b>
			99105-0500-12P	10-1/2 x 12	<b>HHB E1 1012</b>
			99105-0500-13P	10-1/2 x 13	<b>HHB E1 1013</b>
			99105-0500-14P	10-1/2 x 14	<b>HHB E1 1014</b>
			99105-0500-15P	10-1/2 x 15	<b>HHB E1 1015</b>
<b>40 TO 150 HP - EXPRESS - INOX</b>					
13 Splines					
DT 75 / 85 / 90 / 100 / 115 / 140	89 & +	<b>HHB 506</b>	/	14 x 11	<b>HHB PA2 1411</b>
DF 60 / 70	98 & +	<b>HHB 506</b>	/	14 x 13	<b>HHB PA2 1413</b>
			99105-00100-16P	13-1/4 x 15	<b>HHB PA2 1315</b>
			99105-00100-18P	13-1/4 x 17	<b>HHB PA2 1317</b>
			99105-00100-20P	13-1/4 x 19	<b>HHB PA2 1319</b>
			99105-00100-22P	13-1/4 x 21	<b>HHB PA2 1321</b>
15 Splines					
DF 90 / 115	01 & +	<b>HHB 509</b>	58100-90J01-019	14 x 17	<b>HHB PA1 1417</b>
DF140	01 & +	<b>HHB 501</b>	58100-90J11-019	14 x 19	<b>HHB PA1 1419</b>
			58100-90J21-019	14 x 21	<b>HHB PA1 1421</b>
			58100-90J31-019	14 x 23	<b>HHB PA1 1423</b>
Add 2 inches of pitch for OEM propeller replacement					
<b>DE 135 À 300 CV - EXPRESS - INOX</b>					
15 Splines					
DT 150 / 175 / 200 / 225	86 & +	<b>HHB 507</b>		<b>3 Blades RH/LH</b>	<b>HHB PA 1417</b>
DF 150 / 175 / 200 / 225 / 250	All	<b>HHB 507</b>	99105-00200-18P	14-1/4 x 17	<b>HHB PA 1419</b>
			99105-00200-20P	14-1/4 x 19	<b>HHB PA 1421</b>
			99105-00200-22P	14-1/4 x 21	<b>HHB PA 1423</b>
			99105-00200-24P	14-1/4 x 23	
			/	<b>4 Blades</b>	<b>HHB PA 1415 4</b>
			/	14 x 15	<b>HHB PA 1417 4</b>
			/	14 x 17	<b>HHB PA 1419 4</b>
			/	14 x 19	<b>HHB PA 1421 4</b>
			/	14 x 21	<b>HHB PA 1423 4</b>
* Please add "L" at the end of our code to order a Left Hand rotation propeller (LH)					
<b>135 TO 300 HP - EXPRESS - INOX</b>					
15 Splines					
DT 150 / 175 / 200 / 225	86 & +	<b>HHB 507</b>		<b>3 Blades RH/LH</b>	<b>HHB VO 1515</b>
			/	15 x 15	<b>HHB VO 1517</b>
			/	15 x 17	<b>HHB VO 1519</b>
			/	15 x 19	<b>HHB VO 1521</b>
			/	15 x 21	
			/	<b>4 Blades RH/LH</b>	<b>HHB VO 1417 4</b>
			/	14-1/2 x 17	<b>HHB VO 1419 4</b>
			/	14-1/2 x 19	<b>HHB VO 1421 4</b>
			/	14-1/2 x 21	<b>HHB VO 1423 4</b>
			/	14-1/2 x 23	
* Please add "L" at the end of our code to order a Left Hand rotation propeller (LH)					
<b>135 TO 300 HP - EXPRESS - INOX</b>					
15 Splines					
DF 150 / 175	All	<b>HHB 507</b>		<b>3 Blades RH</b>	<b>HHB VO 1617</b>
			/	<b>/LH</b>	<b>HHB VO 1619</b>
			990C0-00830-17P	16 x 17	<b>HHB VO 1621</b>
			990C0-00830-19P	16 x 19	<b>HHB VO 1623</b>
			990C0-00830-21P	16 x 21	
			990C0-00830-23P	16 x 23	
* Please add "L" at the end of our code to order a Left Hand rotation propeller (LH)					
<b>135 TO 300 HP - EXPRESS - INOX</b>					
15 Splines					
DF 200 / 225 / 250	All	<b>HHB 507</b>		<b>3 Blades RH/LH</b>	<b>HHB VO 1615</b>
			/	16 x 15	<b>HHB VO 1617</b>
			99105-00800-17P	16 x 17	<b>HHB VO 1619</b>
			99105-00800-185	16 x 19	<b>HHB VO 1621</b>
			99105-00800-215	16 x 21	<b>HHB VO 1623</b>
			99105-00800-23P	16 x 23	
* Please add "L" at the end of our code to order a Left Hand rotation propeller (LH)					