



**PROPELLER SHAFT**

We manufacture propeller shafts in different grades of steel and stainless steel. All stainless steel bars are bright ground finished according to very precise tolerances, then straightened, machined and checked before shipment.

Ideal alternative for pleasure boats, Temet 26 is a new stainless steel Duplex stemming from Temet 25, combining the advantages of the latter and the economic interest of a 316L.

**«316L» STAINLESS STEEL**

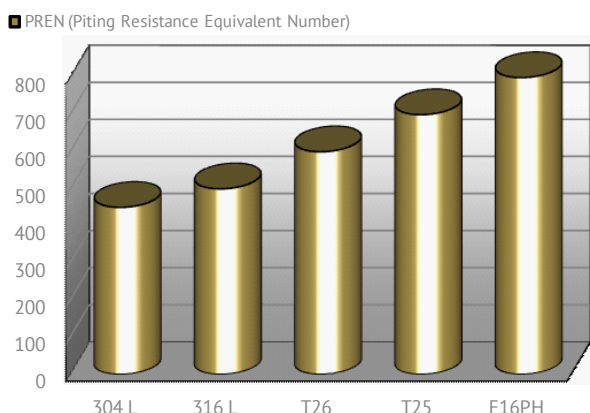
The 316L is a quality standard. Despite having good resistance to electrolysis, it has not the strength of Temet 25. For this reason at the same power, larger diameters are used. 316L fit perfectly to sailing boats and motor boats low powered. The 316L comes up to diameters of 200 mm and lengths of 10m.

**«TEMET 25» STAINLESS STEEL**

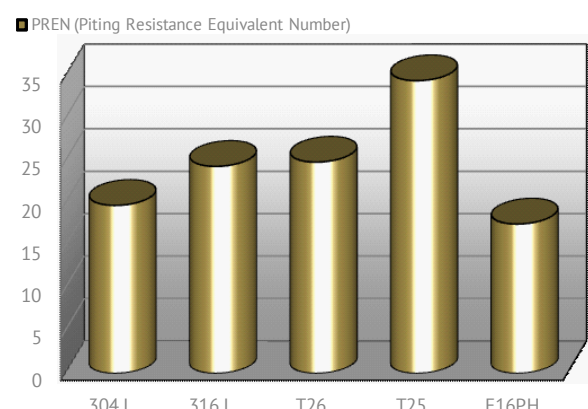
This material is the most efficient stainless steel on the market because it offers both the qualities of mechanical strength and important corrosion resistance. For this reason, it is the solution to all your problems. The high mechanical strength of Temet 25 allows you to use it in a smaller diameter than the last. So you'll save money by reducing the sterntubes and bearings. The Temet 25 is provided to diameters up to 200mm and lengths of 10 m.

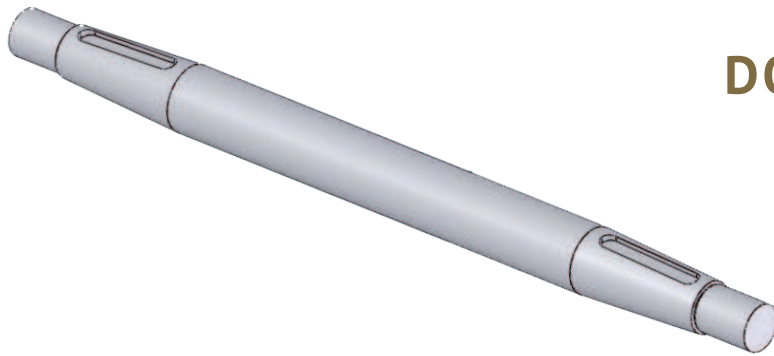
**«TEMET 26» STAINLESS STEEL**

TRACTION RESISTANCE



ELECTROLYSIS RESISTANCE IN MARINE ENVIRONMENT





## DOUBLE TAPERED SHAFT

Double tapered shaft are machined on the both sides, so they are reversible and can be used two times longer.

- ISO Tapered
- Supplied with fitted key
- Straightness 0.08mm
- Bright ground finished, tolérance h9

### 316L

Ø mm	Lg mm	1000	1250	1500	1750	2000	2500	2750	3000	Prop. Nut Anode + washer
22	Réf. ANIIK...	...22100	...22125	...22150	...22175	...22200	...22250	...22275	...22300	ECRKHB16150
25	Réf. ANIIK...	...25100	...25125	...25150	...25175	...25200	...25250	...25275	...25300	ECRKHB16150



Other dimensions on request

### TEMET 26

Ø mm	Lg mm	1000	1250	1500	1750	2000	2500	2750	3000	Prop. Nut Anode + washer
30	Réf. ANYIK...	...30100	...30125	...30150	...30175	...30200	...30250	...30275	...30300	ECRKHB20150
35	Réf. ANYIK...			...35150	...35175	...35200	...35250	...35275	...35300	ECRKHB2420035
40	Réf. ANYIK...			...40150	...40175	...40200	...40250	...40275	...40300	ECRKHB2420040
45	Réf. ANYIK...			...45150	...45175	...45200	...45250	...45275	...45300	ECRKHB30200
50	Réf. ANYIK...			...50150	...50175	...50200	...50250	...50275	...50300	ECRKHB36300



Other dimensions on request

### TEMET 25

Ø mm	Lg mm	1000	1250	1500	1750	2000	2500	2750	3000	Prop. Nut Anode + washer
25.4	Réf. ANUIK...	...254100	...254125	...254150	...254175	...254200	...254250			ECRKHB16150
31.7	Réf. ANUIK...			...317150	...317175	...317200	...317250	...317275	...317300	ECRKHB20150
38.1	Réf. ANUIK...			...381150	...381175	...381200	...381250	...381275	...381300	ECRKHB2420040
44.45	Réf. ANUIK...			...444150	...444175	...444200	...444250	...444275	...444300	ECRKHB30200
50	Réf. ANUIK...			...50150	...50175	...50200	...50250	...50275	...50300	ECRKHB36300
50.8	Réf. ANUIK...			...508150	...508175	...508200	...508250	...508275	...508300	ECRKHB36300



Other dimensions on request