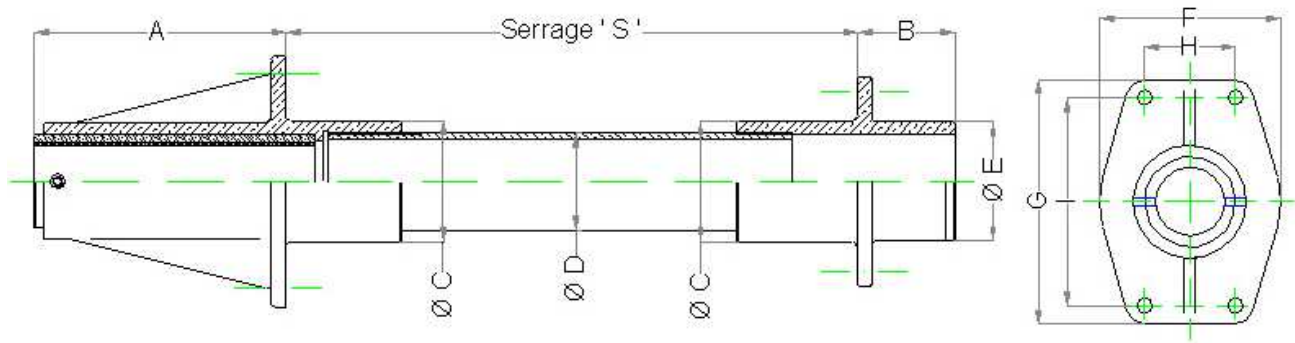




BRONZE FLANGED STERNTUBE



Shaft Ø (mm)	A	B	Ø C	int./ext. Ø D	Ø E	F	G	H	I
22	85	40	40	27.3/33.7 Inox	34	50	80	0	60
25	90	40	45	30/38 Laiton	42	62	90	0	70
30	110	40	48	36.6/42.1 Inox	45	62	90	0	70
35	135	47	56	40/48 Laiton	54	80	120	40	100
40	160	50	65	44/56 Bronze	61	100	150	50	120
45	210	62	85	60/70 Laiton	72	120	200	60	160
50	210	62	85	60/70 Laiton	72	120	200	60	160
55	225	65	100	70/80 Laiton	88	150	220	55	175
60	225	65	100	70/80 Laiton	88	150	220	55	175



Other materials on request

Ce document n'est pas contractuel - This document is not contractual

This mounting is used when the engine / gearbox is mounted on soft pads, and there is no need for intermediate bearing between the rear bearing and coupling.

It comprises of a spacer tube, a water scoop outer bearing and an inboard flexible gland assembly. The bearing is lubricated by water supplied from the engine cooling system. This is injected into the stern tube through the inboard flexible gland.

The length of the tube is defined by the tightened measurement 'S' given by customer.

Depending on the application, a water inlet, usually connected to the engine cooling system can be set up on the tube close to the seal.