



ALUMINIUM PROPELLERS



STAINLESS STEEL PERFORMANCE AT ALUMINUM PRICES

Stainless steel blade geometry used in all aluminum patterns results in less blade flex. Higher efficiency equals better fuel economy, better top end, faster hole shot, and excellent cornering & handling.

TUNED VENTS FOR FAST HOLE SHOT

Vent holes in the prop's barrel allow exhaust gases to escape, reducing water density around the propeller's blades during acceleration. This causes the propeller to rotate faster at slower speeds resulting in more HP. More HP at lower speeds means faster acceleration and a faster hole shot. Turning Point is the only manufacturer offering this race proven feature in our Hustler & Legacy Aluminum Propellers. Available on most models, please refer to selection chart.

PERFORMANCE TUNED RAKE ANGLES

Higher rake angles tighten the vortex produced by the prop, adding to boat lift and overall performance.

IMPROVE HANDLING AND BOAT LIFT

Through advanced pitch line and rake line cupping.

HIGH FLOW-THROUGH BARREL EXHAUST SYSTEM

Maximizing exhaust flow increases horsepower and top end speed.

TUNED PROGRESSIVE PITCH ANGLES

Accelerating and channeling water to minimize slip increases performance and fuel economy.

LONG LASTING FINISH - POWDER COATED

The 5 step process creates a uniform, durable, high-quality, and attractive finish that protects the aluminum from corrosion.

COMPATIBLE WITH COMPETITORS' HUB SYSTEMS

Works with Mercury® Flow-Torq®, Michigan Wheel® XHS®, Solas® Rubex™ hub kit systems (All trademarks are the property of their respective owners). NOTE: Not applicable with Turning Point's 10, 20 and 200 Hub Kit series.

Hub Kit Available for Aluminum

Turning Point offers its unique hub and housing system from 8HP to 300+HP, a range of engines un-matched in the industry. Hub kit covered by USA & worldwide patents

Utilizing high tech shock absorbing polymers and a solid brass spindle, the Turning Point MasterGuard & MasterTorque hubs will not corrode or break like competing hubs, and are covered by an industry leading Lifetime Warranty. Each hub's one piece design ensures simple housing replacement, making a prop change quick and easy.

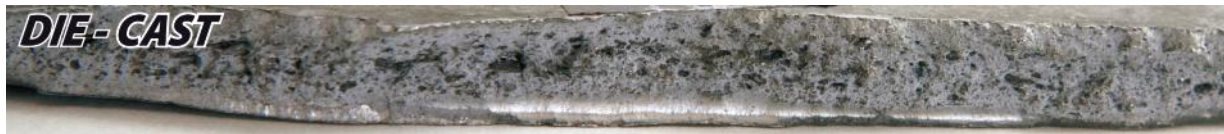


SQUEEZE CAST FOR ADDED STRENGTH

Turning Point Exclusive Process applied to all aluminum props - Squeeze Cast process generates the highest mechanical properties attainable in a cast product, resulting in tighter grain structures. Competitors use old Die Cast processes that results in high blade flex and poor performance.



TURNING POINT EXCLUSIVE PROCESS · TIGHT GRAIN · STRONG AND STIFF · REDUCES FLEX FOR MAXIMUM THRUST



COMPETITORS' PROCESS · POCKETS, VOIDS, AIR BUBBLES · WEAK AND FLEXIBLE · INEFFICIENT TRANSFER OF POWER · POOR REPAIRABILITY



FOUR BLADE ALUMINUM HUSTLER PROPELLER

New Four Blade Design uniquely engineered with two blade geometries: two blades utilize the Hustler high performance variable rake and aggressive pitch design for incredible hole shot and cornering, and two blades utilize a "cleaver" style shape for high speed and maximum stern lift.

This combination results in the highest performance aluminum propeller on the market, unmatched in cornering, acceleration, boat handling, and top speed. This is the ultimate water sports propeller, but also offers any boater four blade performance with none of the usual top speed reductions normal to other designs.



HUB

ELIMINATE HUB SYSTEM VIBRATION & CHATTER

Innovative one-piece design reduces the number of parts and eliminates failures commonly seen in multi-part hub systems.

ELIMINATE HUB CRACKING & FAILURE

The glass reinforced high-tech polymer construction increases flexibility, eliminating potential material stress fractures.

CORROSION RESISTANT MATERIALS

Premium corrosion resistant brass splines.

REDUCE GEAR SHOCK & ENGINE/DRIVE DAMAGE

Shock absorbing hi-tech polymer cushion.

REDUCES INVENTORY COST

Turning Point is the only manufacturer to offer the hub and housing system down to 8HP outboard applications.

REDUCE PROP REPLACEMENT COST BY 20-30%

Hub kits are designed to be reusable even after most propeller impacts, eliminating the need to replace the hub system when replacing a damaged propeller.

EASY TO INSTALL – CONSUMER FRIENDLY

Clear and easy step by step directions coupled with minimal parts makes installation easy.

INCREASES PERFORMANCE AND HP

High-flow through barrel exhaust system maximizes exhaust flow increasing horsepower and top end speed.



INTERCHANGEABLE AVEC LES HÉLICES CONCURRENTES INTERCHANGES WITH OTHER MANUFACTURERS' PROPELLERS

Upgrades and replaces Mercury® Flow-Torq®, Michigan Wheel® XHS®, Solas® Rubex™ hub kit systems (All trademarks are the property of their respective owners). NOTE: Not applicable with Turning Point's 10, 20 and 200 Hub Kit series.



REDUCES 25-75HP HUB INVENTORY BY ALMOST 60%

Competitor's hub kit systems take 7 kits to fit engine applications in the 25-75HP range, where Turning Point only needs 3 kits (10 Series Hub Kits).

US Patent #6,471,481, #6,685,432 & worldwide patents.

US and worldwide patents pending.



500 SERIES HUB SYSTEM
40 - 300+ HP

10 SERIES HUB SYSTEM
40 - 75 HP



20 SERIES HUB SYSTEM
20 - 35 HP



200 SERIES HUB SYSTEM
8 - 18 HP





STAINLESS STEEL PROPELLERS

IMPROVED HANDLING AND BOAT LIFT

Through advanced pitch line and rake line cupping, maximizes exhaust flow increasing horsepower and top end speed.

TUNED PROGRESSIVE PITCH ANGLES

Accelerating and channeling water to minimize slip increases performance and fuel economy.

TUNED VENTS FOR FAST HOLE SHOT

Vent holes in the prop's barrel allow exhaust gases to escape, reducing water density around the propeller's blades during acceleration. This causes the propeller to rotate faster at slower speeds resulting in more HP. More HP at lower speeds means faster acceleration and a faster hole shot.

HIGH FLOW-THROUGH BARREL EXHAUST SYSTEM

Maximizing exhaust flow increases horsepower and top end speed

COMPATIBLE WITH COMPETITORS' HUB SYSTEMS

Works with Mercury® Flow-Torq®, Michigan Wheel® XHS®, Solas® Rubex™ hub kit systems (All trademarks are the property of their respective owners).
NOTE: Not applicable with Turning Point's 10, 20 and 200 Hub Kit series.

HUB KIT SYSTEM AVAILABLE FOR STAINLESS

Turning Point offers its unique hub and housing system from 8HP to 300+HP, a range of engines unmatched in the industry. Hub kit covered by USA & worldwide patents

Utilizing high tech shock absorbing polymers and a solid brass spindle, the Turning Point MasterGuard & MasterTorque hubs will not corrode or break like competing hubs, and are covered by an industry leading Lifetime Warranty. Each hub's one piece design ensures simple housing replacement, making a prop change quick and easy.



Ce document n'est pas contractuel - This document is not contractual



Engine	Year	Hub ref.	OEM Ref.	Ø x Pitch	Propeller Ref.
8 TO 18 HP - HUSTLER - ALUMINIUM					
8 Splines					
BF8	01 & +	HHB 205			
BF9.9	88 & +	HHB 205	58130-ZV4-701ZA	9 x 9	HHB R4 0909
BF15 / BF20	All	HHB 205	58130-ZV4-030ZA	9 x 10	HHB R4 0910
20 TO 35 HP - HUSTLER - ALUMINIUM					
10 Splines					
BF25	All	HHB 28	58130-ZV7-000ZA	10-3/8 x 11	HHB R2 1011
BF30	All	HHB 28	/	10-3/8 x 13	HHB R2 1013
40 TO 75 HP - HUSTLER - ALUMINIUM					
13 Splines					
BF35	All	HHB 12	58130-ZV5-960ZA	12-1/2 x 8	HHB H1 1208
BF40	All	HHB 12	58130-ZV5-860ZA	12 x 10-1/2	HHB H1 1210
BF45	All	HHB 12	/	10-7/8 x 11	HHB H1 1011
BF50	All	HHB 12	58130-ZV5-850ZA	10-3/4 x 12	HHB H1 1012
			58130-ZV5-000ZA	10-1/2 x 13	HHB H1 1013
			/	10-3/8 x 14	HHB H1 1014
			58130-ZV5-870ZA	10-1/8 x 15	HHB H1 1015
40 TO 150 HP - HUSTLER - ALUMINIUM					
15 Splines					
BF75 / BF90	<98	HHB 501	58130-ZW1-W01ZA	14 x 11	HHB LE1 1411
BF75 / BF90	99 & +	HHB 507	58130-ZW1-W11ZA	14 x 13	HHB LE1 1413
BF115	All	HHB 507	58130-ZW1-W21ZA	13-3/4 x 15	HHB LE1 1315
BF130	All	HHB 507	58130-ZW1-W21ZA	13-1/4 x 17	HHB LE1 1317
			58130-ZW1-W61ZA	13-1/4 x 19	HHB LE1 1319
			58130-ZW1-W41ZA	13-1/4 x 21	HHB LE1 1321
135 TO 300 HP - HUSTLER - ALUMINIUM					
15 Splines					
BF135	All	HHB 507			3 Pales
BF150	All	HHB 507	58130-ZY3-015A	15-1/4 x 15	HHB LE 1515
BF200	All	HHB 507	58130-ZY3-017A	14-1/2 x 17	HHB LE 1417
BF225	All	HHB 507	58130-ZY3-019A	14-1/4 x 19	HHB LE 1419
			58130-ZY3-021A	14-1/4 x 21	HHB LE 1421
			58130-ZY3-023A	14-1/4 x 23	HHB LE 1423
			/	14 x 17	4 Pales RH & LH
			/	14 x 19	HHB LE 1417 4(L)
			/	14 x 21	HHB LE 1419 4(L)
					HHB LE 1421 4(L)
40 TO 75 HP - EXPRESS - INOX					
13 Splines					
BF35	Toutes	HHB 12	58110-ZV5-E50	12 x 9	HHB E1 1209
BF40	Toutes	HHB 12	/	12 x 11	HHB E1 1211
BF45	Toutes	HHB 12	/	12 x 13	HHB E1 1213
BF50	Toutes	HHB 12	58110-ZV5-E40	10-1/2 x 11	HHB E1 1011
			58110-ZV5-E30	10-1/2 x 12	HHB E1 1012
			58110-ZV5-E20	10-1/2 x 13	HHB E1 1013
			58110-ZV5-E10	10-1/2 x 14	HHB E1 1014
			58110-ZV5-E00	10-1/2 x 15	HHB E1 1015



40 TO 150 HP - EXPRESS - INOX

Engine	Year	Hub ref.	OEM Ref.	Ø x Pitch	Propeller Ref.
15 Splines					
BF75 / BF90	<98	HHB 501	/	14 x 11	HHB PA1 1411
BF75 / BF90	99 & +	HHB 507	/	14 x 13	HHB PA1 1413
BF115	All	HHB 507	58130-ZW1-W91	13-1/4 x 15	HHB PA1 1315
			58130-ZW1-V01	13-1/4 x 17	HHB PA1 1317
BF130	All	HHB 507	58130-ZW1-V11	13-1/4 x 19	HHB PA1 1319
			58130-ZW1-V31	13-1/4 x 21	HHB PA1 1321

135 TO 300 HP - EXPRESS - INOX

15 Splines					
BF135	All	HHB 507		3 Blades RH	
BF150	All	HHB 507		*(or LH)	
BF200	All	HHB 507	58233-ZY3-A17H	14-1/4 x 17	HHB PA 1417
			58233-ZY3-A17H	14-1/4 x 19	HHB PA 1419
BF225	All	HHB 507	58233-ZY3-A21H	14-1/4 x 21	HHB PA 1421
			58233-ZY3-A23H	14-1/4 x 23	HHB PA 1423
			/	4 Blades	
			/	14 x 15	HHB PA 1415 4
			/	14 x 17	HHB PA 1417 4
			/	14 x 19	HHB PA 1419 4
			/	14 x 21	HHB PA 1421 4

* Please add "L" at the end of our code to order a Left Hand rotation propeller (LH)

135 TO 300 HP - EXPRESS - INOX

15 Splines					
BF135	All	HHB 507		3 Pales RH	
BF150	All	HHB 507		*(ou LH)	
BF200	All	HHB 507	58333-ZY3-A15CL	15 x 15	HHB VO 1515
			58333-ZY3-A17CL	15 x 17	HHB VO 1517
BF225	All	HHB 507	58333-ZY3-A19CL	15 x 19	HHB VO 1519
			58333-ZY3-A21CL	15 x 21	HHB VO 1521
			/	4 Pales RH	
			/	*(ou LH)	
			/	14-1/2 x 17	HHB VO 1417 4
			/	14-1/2 x 19	HHB VO 1419 4
			/	14-1/2 x 21	HHB VO 1421 4
			/	14-1/2 x 23	HHB VO 1423 4

* Please add "L" at the end of our code to order a Left Hand rotation propeller (LH)

Ce document n'est pas contractuel - This document is not contractual